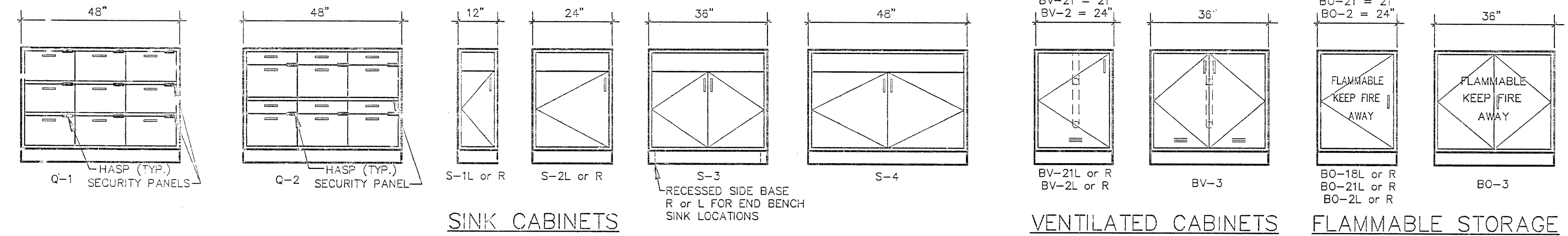
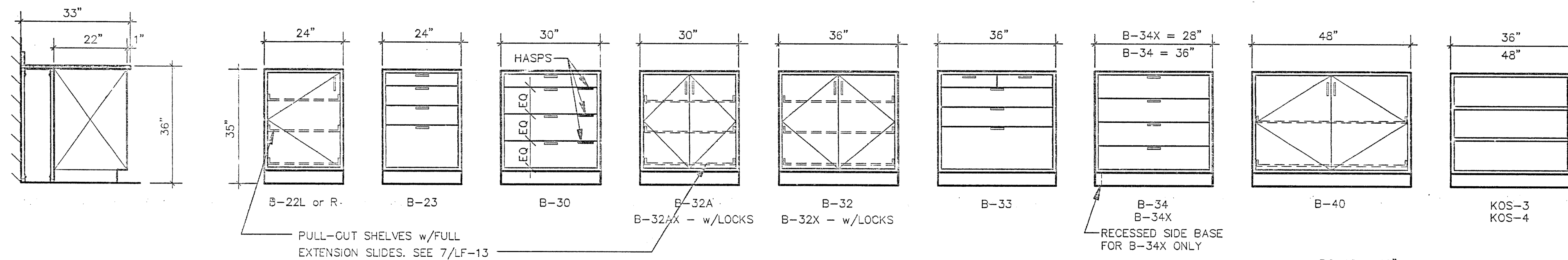
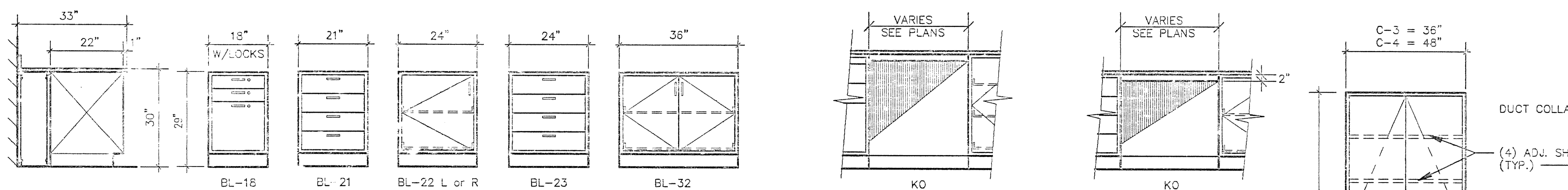


CASEWORK

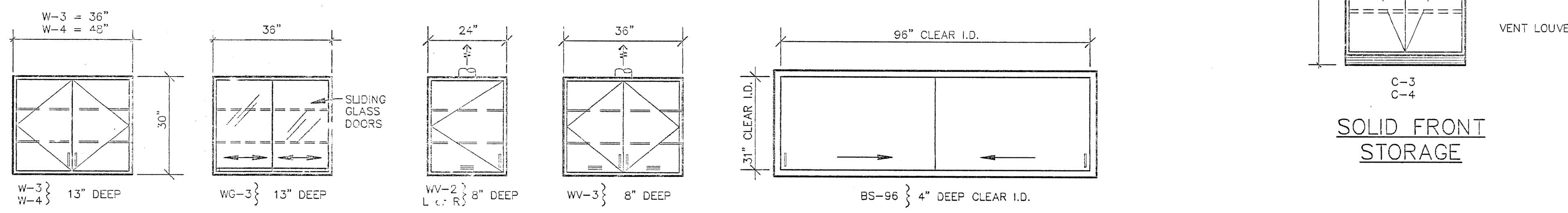
SCALE: 1/2" = 1'-0"



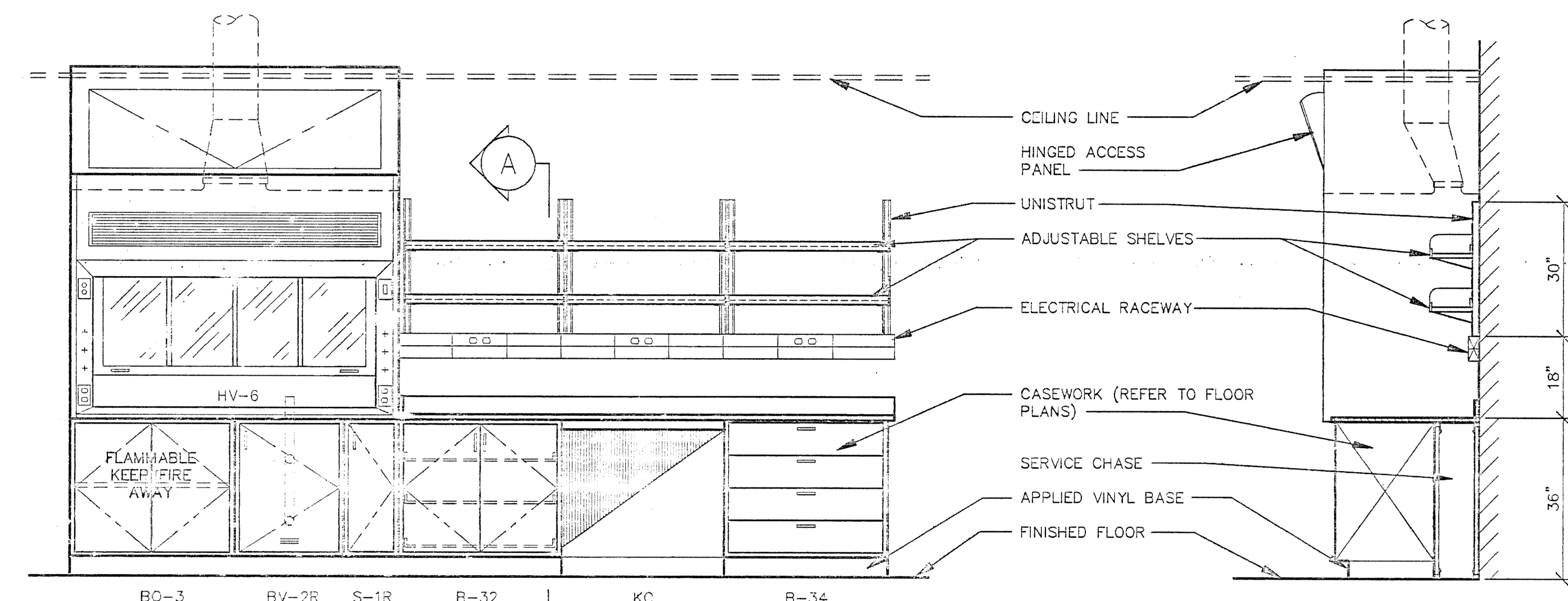
STANDING HEIGHT CABINETS



SITTING HEIGHT CABINETS

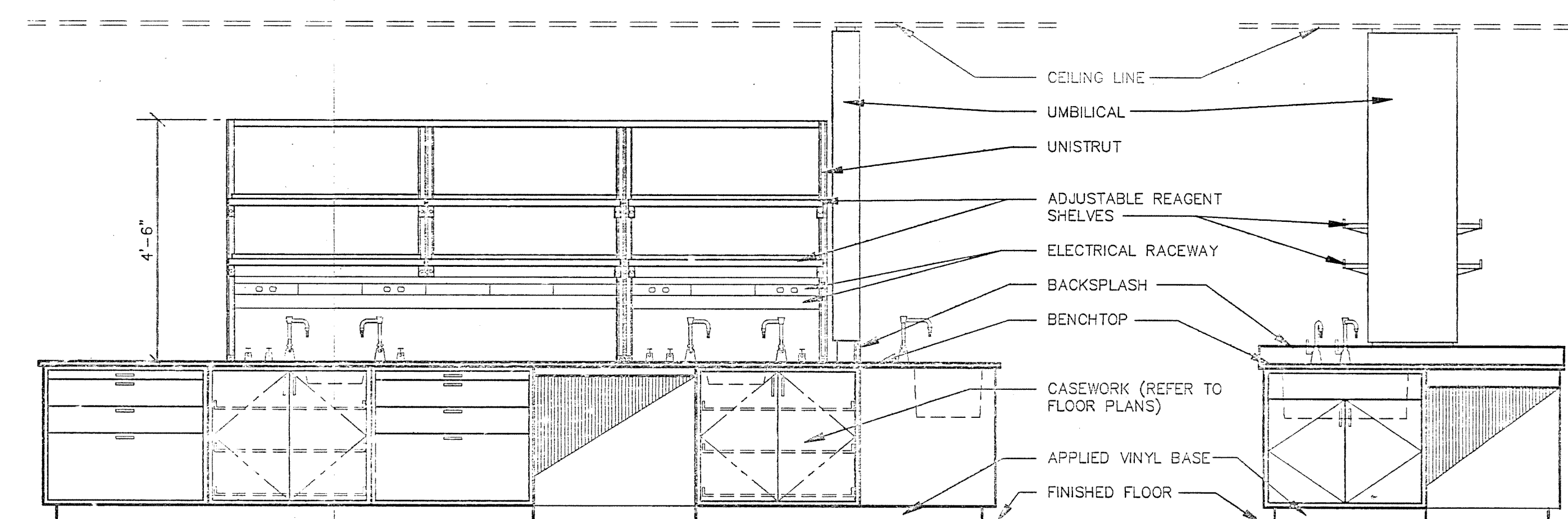


SOLID FRONT WALL CABINETS



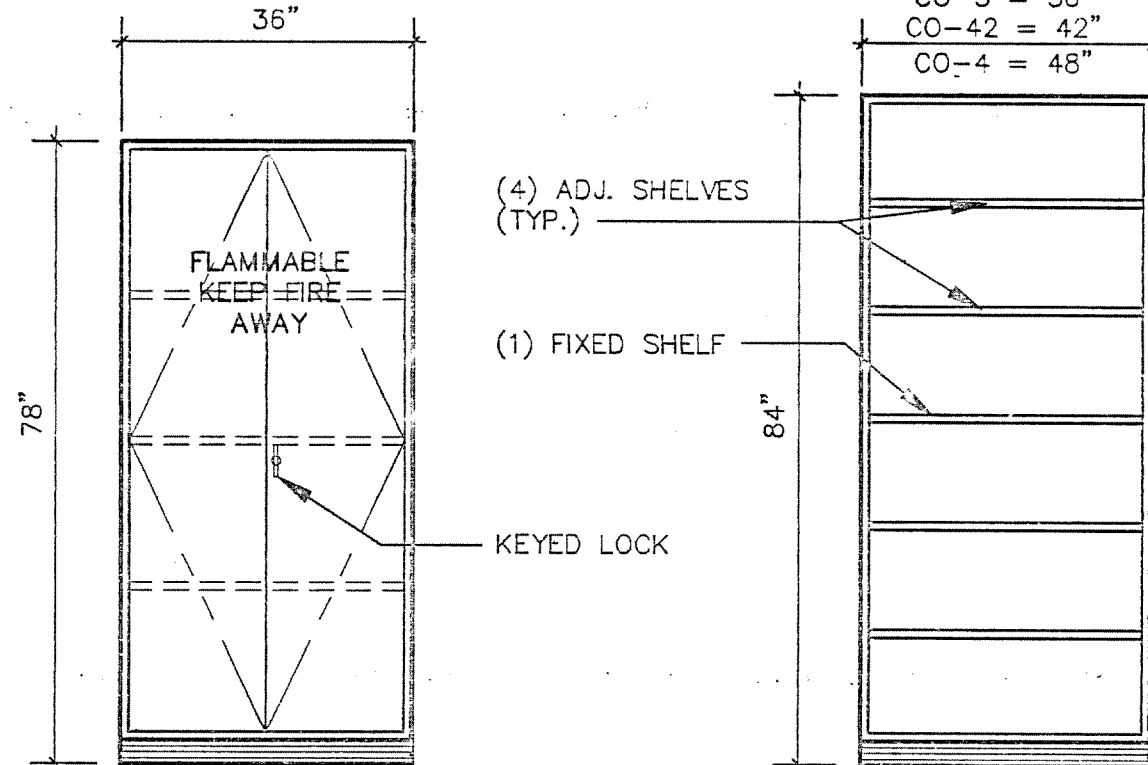
TYPICAL WALL BENCH ELEVATION (FOR REFERENCE ONLY)

SECTION A



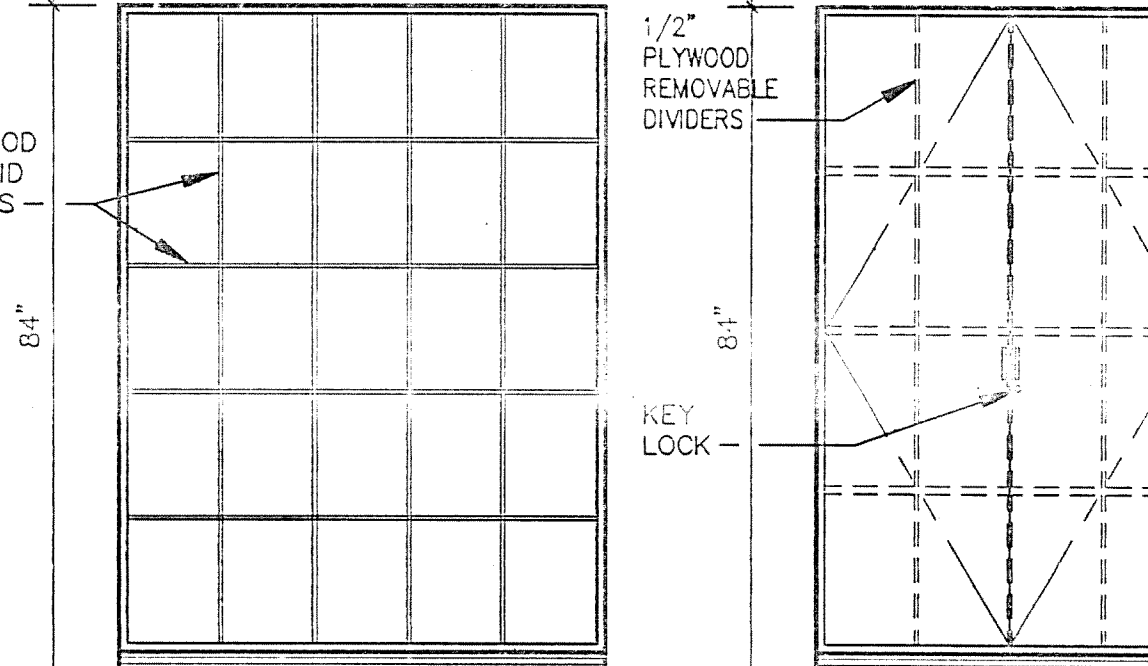
TYPICAL ISLAND BENCH ELEVATION (FOR REFERENCE ONLY)

END ELEVATION



FLAMMABLE STORAGE CABINET

OPEN FRONT STORAGE CABINET



BACK PACK STORAGE CABINET

MICROSCOPE STORAGE CABINET

TALL STORAGE CABINETS

NOTES:
1. 22" DEEP UNLESS OTHERWISE NOTED ON PLANS.
2. FINISH BOTH SIDES AND BACK. BASE SHALL BE WOOD FINISH.
3. ALL SHELVES TO BE 1" THICK

LAB FURNISHINGS LEGEND

1	UMBILICAL	1	UMBILICAL
2a	ADJUSTABLE WALL SHELVING	2	ADJUSTABLE WALL SHELVING
2b	ADJUSTABLE REAGENT SHELVING	7	ADJUSTABLE REAGENT SHELVING
3	DRYING RACK	3	DRYING RACK
4	CYLINDER STRAP	4	CYLINDER STRAP
5	SNORKEL	5	SNORKEL
6	OVERHEAD SERVICE CARRIER	5	OVERHEAD SERVICE CARRIER
7	BENCHTOP SLEEVE	1	BENCHTOP SLEEVE

SYMBOLS

2	CUPSINK	2	CUPSINK
2	EPOXY SINK	2	EPOXY SINK
2	STAINLESS STEEL SINK	2	STAINLESS STEEL SINK
2	CHEMICAL FUME HOOD	2	CHEMICAL FUME HOOD
2	BIOLOGICAL SAFETY CABINET	2	BIOLOGICAL SAFETY CABINET
2	O.F.O.I. EQUIPMENT	2	O.F.O.I. EQUIPMENT
2	UMBILICAL	2	UMBILICAL
2	SNORKEL	2	SNORKEL
2	EQUIPMENT NUMBER (SEE SPECS.)	2	EQUIPMENT NUMBER (SEE SPECS.)

TOP MATERIAL

E	EPOXY TOP
P	PLASTIC LAMINATE
S	STAINLESS STEEL

SINK SCHEDULE

SK-1	21" x 17" x 10"D	EPOXY RESIN
SK-2	28" x 15" x 12"D	EPOXY RESIN
SK-3	16" x 22" x 10 1/2"D	STAINLESS STEEL
SK-4	12" x 16" x 8"D	EPOXY RESIN
SK-5	18" x 15" x 11"D	EPOXY RESIN
SK-6	36" x 16" x 1 1/2"D	ST. STL. W/SELF-RIM
SK-7	18" x 15" x 11"D	ST. STL. W/SELF-RIM

LAB FURNISHINGS ABBREVIATIONS

B	BASE CABINET STANDING HEIGHT
BL	BASE CABINET SITTING HEIGHT
BO	FLAMMABLE STORAGE BASE CABINET
BV	VENTED BASE CABINET
C	TALL STORAGE SOLID FRONT
CO	TALL STORAGE OPEN FRONT
CV	TALL VENTED STORAGE SOLID FRONT
CO	TALL FLAMMABLE STORAGE
OV	TALL VENTED FLAMMABLE STORAGE
L	LEFT HAND HINGED
R	RIGHT HAND HINGED
S	SINK CABINET
SK	SINK
W	WALL CABINET SOLID FRONT
WV	WALL CABINET GLASS FRONT
ST	STAINLESS STEEL
C.F.O.	COUNTER FURNISHING OWNER INSTALLED
CW	COLD WATER
HW	HOT WATER
DW	DEIONIZED WATER
GAS	GAS
LA	LAB AIR (15 #)
LV	LAB VACUUM
A	HIGH PRESSURE AIR (100 #)
EW	EYE WASH
ES	EMERGENCY SHOWER
X	W/ LOCK

GENERAL NOTES

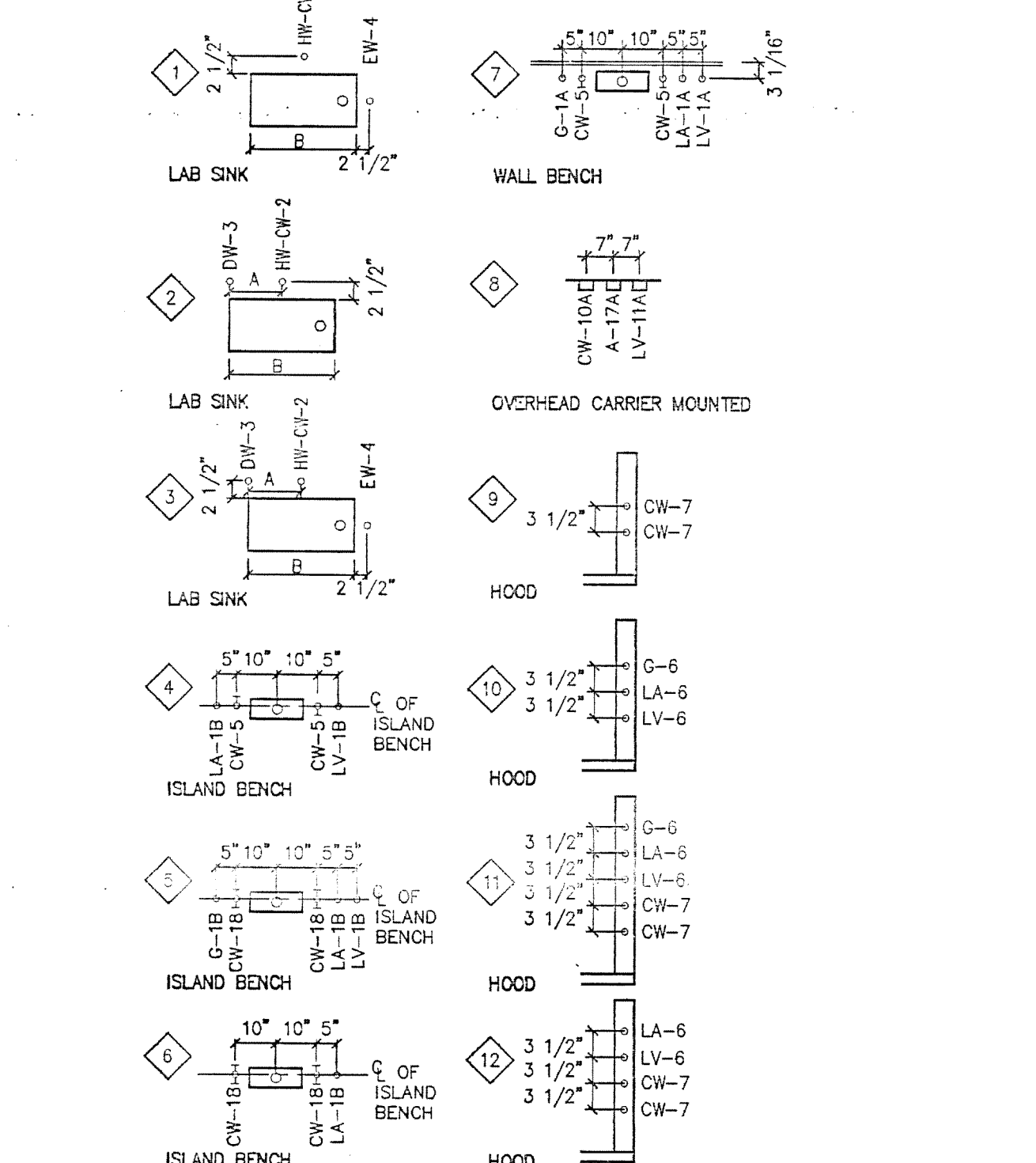
- LAB. FURNISHINGS DIVISION 11 CONTRACTOR SHALL CAREFULLY EXAMINE THE LABORATORY FURNISHINGS DRAWINGS AND SPECIFICATIONS AND ALL OTHER DRAWINGS AND SPECIFICATIONS TO PROPERLY DETERMINE CONTRACTUAL RESPONSIBILITIES.
- FOR ACTUAL ROOM DIMENSIONS REFER TO ARCHITECTURAL PLANS.
- LAB FURNISHINGS CONTRACTOR SHALL FIELD-CHECK ALL DIMENSIONS BEFORE FABRICATION.
- FOR LOCATION OF OVERHEAD SERVICE CARRIERS, SNORKELS, AND ANY OTHER FURNISHINGS THAT PENETRATE CEILING SEE ARCHITECTURAL REFLECTED CEILING PLANS. UMBILICAL CEILING PENETRATIONS ARE SHOWN APPROXIMATELY ON ARCHITECTURAL REFLECTED CEILING PLANS. EXACT LOCATIONS AS PER LAB FURNISHINGS PLANS.
- LOCATION OF EQUIPMENT, SUCH AS ISLAND BENCH SHELF SUPPORTS, OVERHEAD SERVICE CARRIERS, UMBILICAL ENCLOSURES, FUME HOODS, BRACES, OR ANY OTHER ITEMS THAT MAY INTERFERE WITH LIGHTING, STRUCTURAL, OR MECHANICAL SYSTEMS, SHALL BE CAREFULLY COORDINATED AND DISCREPANCIES BROUGHT TO ARCHITECTS ATTENTION IMMEDIATELY.
- ANY TYPE OF UNISTRUT, SLOTTED STANDARD FRAME, WALL SHELVING OR REAGENT SHELVING SUPPORTS USED (FOR RACKS, SHELVING, ETC.) SHALL BE SPACED AND POSITIONED TO CLEAR FITTINGS, ELECTRICAL PEDESTALS, SINKS AND CUPSINKS.
- OVERALL LENGTH OF TOPS SHALL BE DETERMINED BY CASEWORK AND DIMENSIONS AS INDICATED ON PLANS. SUCH LENGTHS SHALL REMAIN CONSTANT REGARDLESS OF SUCCESSFUL BIDDER'S STANDARDS. TOPS SHALL OVERHANG 1/2" AT EACH END AND 1" FROM FRONT OF BASE CABINET OR HORIZONTAL RAIL WHEN OVERALL DIMENSIONS ARE GIVEN, 1/2" OVERHANG IS NOT INCLUDED.
- OVERALL HEIGHT OF BASE CABINET TOPS MUST BE MAINTAINED AS SHOWN ON DRAWINGS (NOMINAL HEIGHT).
- INSTALLATION OF CASEWORK SHALL BEGIN AT THE HIGH POINT OF THE ROOM WITH THE LEVELERS SCREWED IN AS FAR AS POSSIBLE.
- COUNTERTOPS AND SPLASHES SHALL BE SCRIBED TO MATCH IRREGULARITIES AND CONTOURS OF WALLS.
- ALL EXPOSED-TO-VIEW COUNTERTOP EDGES, BACKS OF SPLASHES, ALL EDGES OF TABLES, BACKS, OF COUNTERTOPS AND SPLASHES HELD AWAY FROM WALL SHALL BE FILLED, SEALED, AND FINISHED.
- FILLER PANELS SHALL BE USED BETWEEN BACK OF CABINETS OR HOODS AND WALLS AT EXPOSED ENDS AND WHEN BASE CABINETS AND/OR HOODS ARE SET BACK-TO-BACK, FILLER SHALL OCCUR EVEN WHERE NO BASE CABINET OCCURS BUT BENCH IS PRESENT.
- ALL CASEWORK, FUME HOODS AND ANY OTHER FURNISHINGS WITH EXPOSED-TO-VIEW BACKS AND SIDES SHALL BE FINISHED.
- ALL WALL BENCH TOPS SHALL BE 2'-0" DEEP INCLUDING BACKSPLASH, U.O.N. & ISLAND OR PENINSULA BENCHES 5'-6" WIDE UNLESS OTHERWISE NOTED ON DRAWINGS.
- UNLESS OTHERWISE NOTED, ALL UNISTRUT BRACKETS AND FITTINGS INDICATED ON LABORATORY FURNISHINGS DRAWINGS SHALL BE SUPPLIED, INSTALLED, AND PAINTED BY LAB FURNISHINGS DIVISION 11 CONTRACTOR.
- FOR PLUMBING SERVICE FITTING TYPES, LOCATION AND ORDER, SEE LABORATORY FURNISHINGS FLOOR PLANS & DETAILS, THESE FITTINGS SHALL BE SUPPLIED AND INSTALLED BY LAB FURNISHINGS CONTRACTOR FOR FINAL CONNECTION BY PLUMBING CONTRACTOR.
- ALL PLUMBING SYSTEM HANGERS AND FASTENERS SHALL BE PROVIDED AND INSTALLED BY PLUMBING CONTRACTOR.
- ALL LABORATORY SINKS AND CUPSINKS SHALL BE FURNISHED AND INSTALLED BY LAB FURNISHINGS CONTRACTOR. DIVISION 15 CONTRACTOR TO CONNECT SINKS TO LAB WASTE SYSTEM.
- FOR FUME HOOD PRE-PLUMBING AND PRE-WIRING, SEE LAB FURNISHINGS PLANS AND DETAILS.
- ALL EXPOSED PIPING & CONDUIT SHALL BE PAINTED. COLOR SELECTION BY ARCHITECT.
- ALL PENETRATIONS THROUGH COUNTERTOP SHALL BE CAULKED BY LAB FURNISHINGS CONTRACTOR WITH AOD-RESISTANT SEALANT.
- "E" ITEMS NOTED ON PLANS REFER TO EQUIPMENT ITEMS SPECIFIED UNDER SPECIFICATION SECTION 11600.
- ARCHITECT SHALL SELECT COLORS FOR ALL COMPONENTS OF PROJECT INDICATED ON THESE DRAWINGS. COLOR SELECTION COULD BE FROM NON STANDARD COLORS.
- TOP MATERIAL SHALL BE 1" THICK U.O.N..
- TALL STORAGE CABINETS SHALL BE SECURED TO WALL TO PREVENT TIPPING.

ADD ALTERNATE NOTES:

- IN ROOMS DESIGNATED AS ADD ALTERNATE, THE BASE BID SHALL INCLUDE: ALL DUCTWORK ABOVE THE CEILING CAPPED AT THE POINT OF CONNECTION FOR FUME HOODS, SNORKELS, UMBILICALS, VENTILATED CABINETS ETC.
- ADD ALTERNATE BID SHALL INCLUDE ALL FURNITURE AND FURNISHINGS, FUME HOODS, SINKS AND SERVICE FITTINGS, SNORKELS, UMBILICALS, BENCH TOPS ETC. TO COMPLETE A WORKING LABORATORY IN ALL ASPECTS AS SHOWN ON THESE DRAWINGS.

SERVICE FITTING SCHEDULE

EXAMPLE:
LA-1A INDICATES TYPE OF FITTING ABBREVIATED INDIVIDUALLY ON FLOOR PLANS.
LA-1C NUMERICAL REFERENCE OF FITTING ELEV. A = 7" IF B = 21" OR LESS
A = 9" IF B > 21"



KEY SHEET SCALE: 1/2" = 1'-0"

DRAWING REVISIONS:		DATE: 5/15/04	SHEET NO.:
NO.	DATE:	PROJECT: 6662	
DESIGNED BY: FJK		CHECKED BY: FJK	
DRAWN BY: MDM, DCK		CHECKED BY: FJK	

JEFFRIES AND FARIS ASSOCIATES
ARCHITECTS & PLANNERS
SEA TOWERS, SUITE 201
2002 EASTWOOD ROAD
WILMINGTON, N.C. 28403
TEL: 910.256.6633
FAX: 910.256.9688

UNIVERSITY OF NORTH CAROLINA AT WILMINGTON
CODE 41330 ITEM 301 ID#6084280801A

LFO